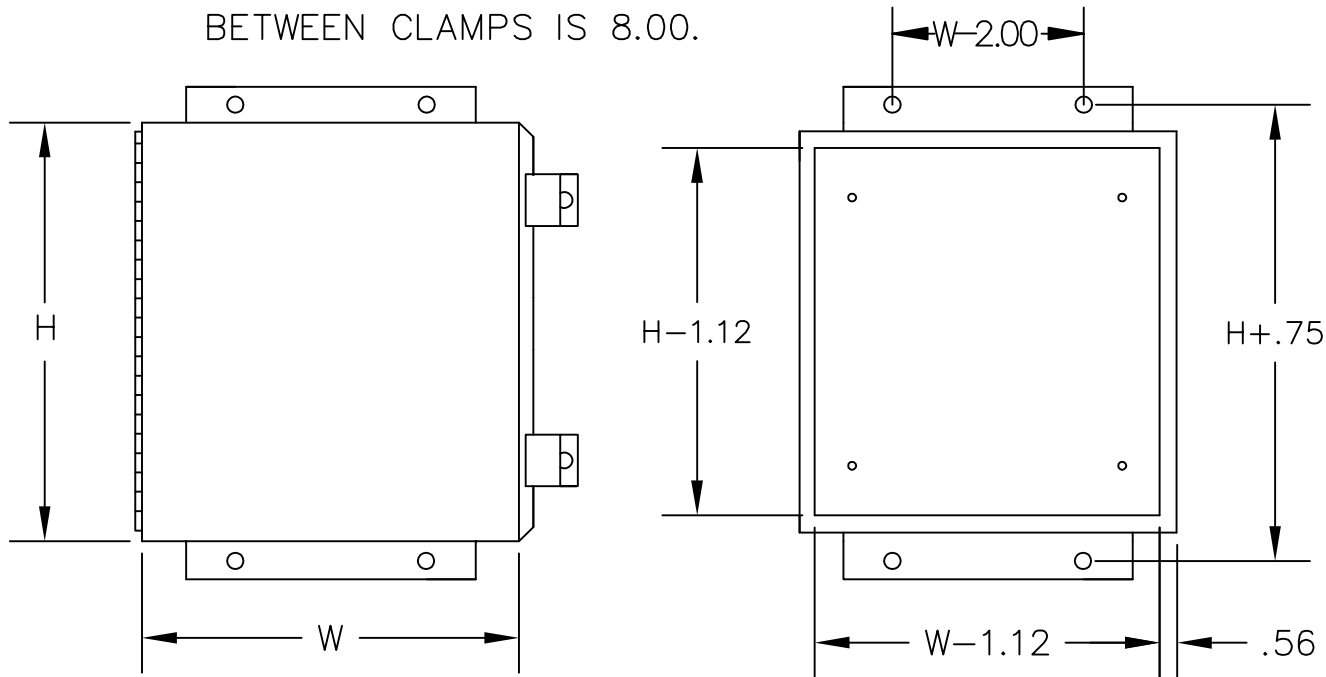


CATALOG#: JHN12

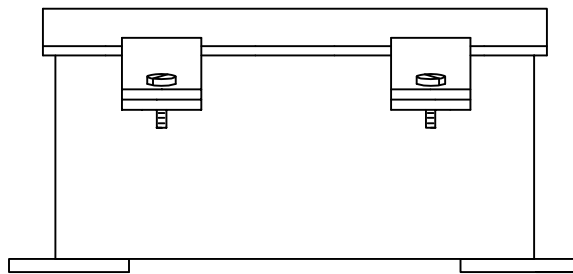
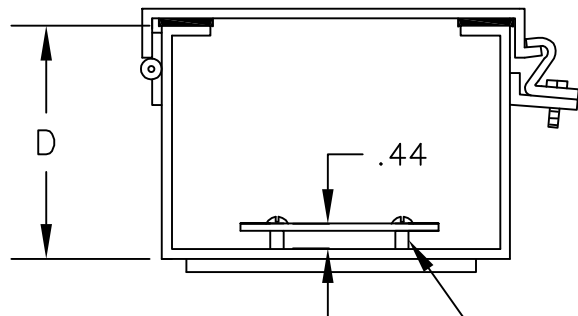
UL LISTED

CANADIAN UL LISTED

NOTE: MAXIMUM SPACING BETWEEN CLAMPS IS 8.00.



JIC HINGE COVER TYPE 12



10-32 x 7/16 STANDOFF STUD

CONSTRUCTION:

- CODE GAUGE PAINT GRIP GALVANIZED STEEL.
- SEAMS CONTINUOUSLY WELDED AND GROUND SMOOTH.
- SCREW CLAMPS ARE QUICK AND EASY TO OPERATE.
- CONTINUOUS HINGE.
- OIL-RESISTANT GASKET.
- OPTIONAL PANEL.

FINISH:

- ANSI 61 GRAY POLYESTER POWDER COATING INSIDE AND OUT

-H-	-W-	-D-

APPROVAL: _____



E-BOX
 101 Air Park Industrial Road
 Alabaster, Alabama 35007
 Phone: (205)663-9189
 Fax: (205)663-9587

