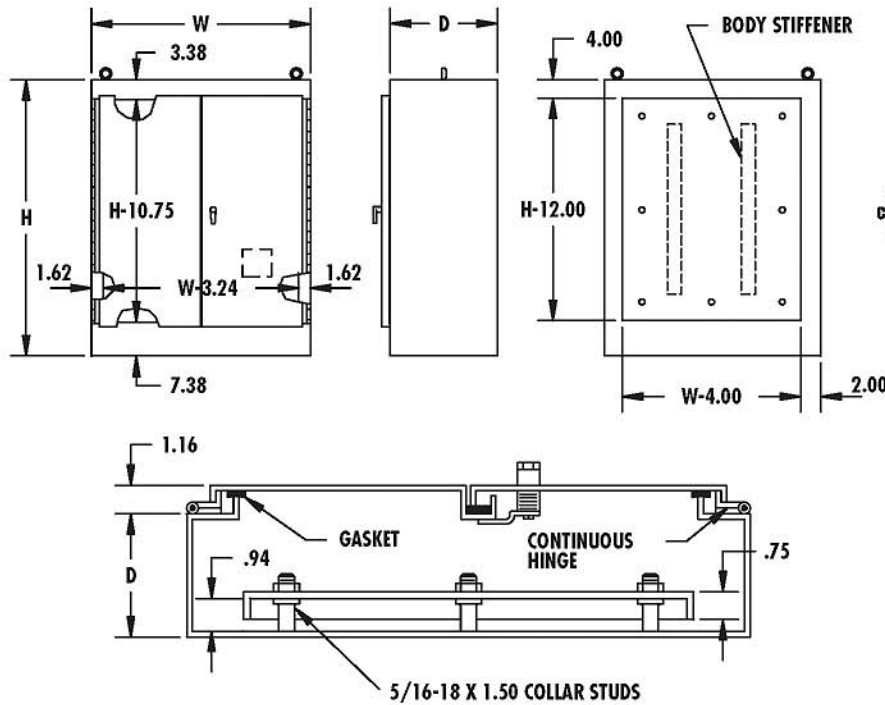


FREESTANDING DOUBLE DOOR TYPE 12 ENCLOSURES - LESS PANEL



CONSTRUCTION:

- 12 GAUGE STEEL
- SEAMS CONTINUOUSLY WELDED AND GROUND SMOOTH
- GASKETED OVERLAPPING DOORS ELIMINATE NEED FOR CENTER POST
- 3-POINT LATCHING MECHANISM OPERATED BY OIL-TIGHT KEY LOCKING HANDLE
- LATCH RODS HAVE ROLLERS FOR EASIER DOOR CLOSING
- HEAVY GAUGE CONTINUOUS HINGE
- HEAVY-DUTY LIFTING EYES
- REMOVABLE PRINT POCKET
- OIL RESISTANT GASKET
- OPTIONAL STUDS OR UNISTRUT PROVIDED FOR MOUNTING OPTIONAL PANEL

FINISH:

- ANSI 61 GRAY POLYESTER POWDER COATING INSIDE AND OUT

FREESTANDING DOUBLE DOOR-TYPE 12			STEEL PANEL (WHITE)	
Enclosure Size HxWxD	Catalog Number	Weight	Catalog Number	Weight
72x48x18	DF724818N12	500	DF7248P	131
72x60x18	DF726018N12	568	DF7260P	158
72x72x18	DF727218N12	645	DF7272P	187
90x72x20	DF907220N12	781	DF9072P	238
72x48x24	DF724824N12	530	DF7248P	131
72x60x24	DF726024N12	645	DF7260P	158
72x72x24	DF727224N12	695	DF7272P	187
90x72x24	DF907224N12	825	DF9072P	238
72x60x36	DF726036N12	750	DF7260P	158
90x72x36	DF907236N12	1000	DF9072P	238

TYPE 12

FOR LARGE QUANTITIES CALL FACTORY