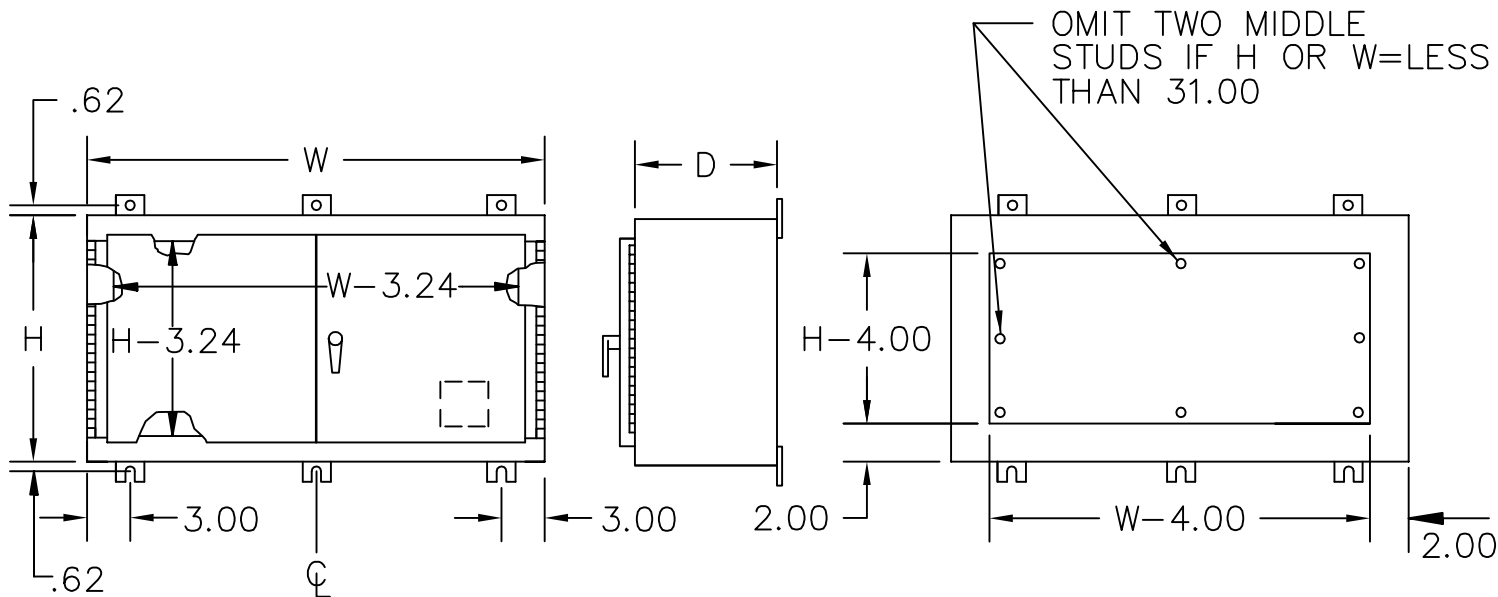


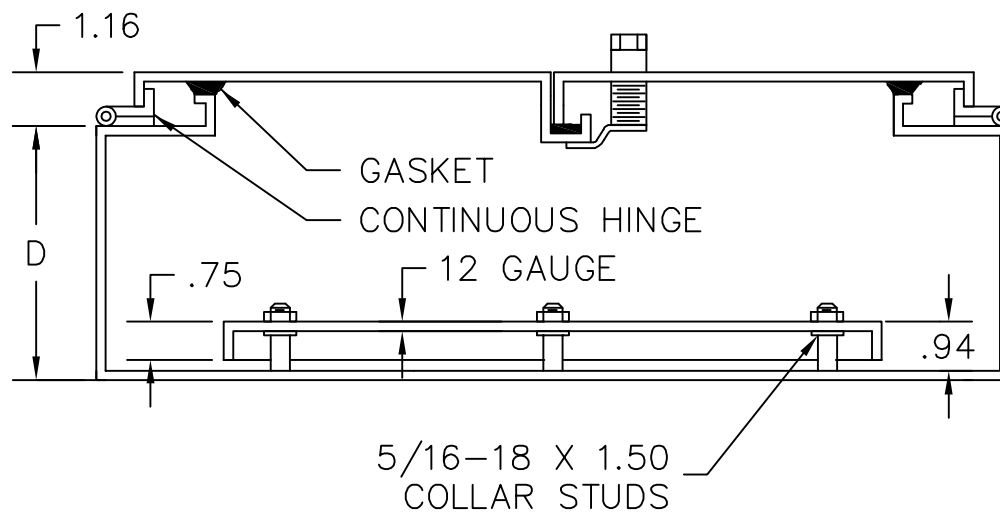
CATALOG#: DWN12

UL LISTED

CANADIAN UL LISTED



TWO DOOR WALL-MOUNTED TYPE 12 ENCLOSURES



CONSTRUCTION:

- 12 GAUGE STEEL.
- SEAMS CONTINUOUSLY WELDED AND GROUND SMOOTH.
- GASKETED OVERLAPPING DOORS ELIMINATE NEED FOR CENTER POST.
- 3-POINT LATCHING MECHANISM OPERATED BY OIL-TIGHT KEYLOCKING L-HANDLE.
- LATCH RODS HAVE ROLLERS FOR EASIER DOOR CLOSING.
- HEAVY GAUGE CONTINUOUS HINGE.
- REMOVABLE PRINT POCKET.
- OIL RESISTANT DOOR GASKET.
- STUDS PROVIDED FOR MOUNTING OPTIONAL PANEL.

FINISH:

- ANSI 61 GRAY POLYESTER POWDER COATING INSIDE AND OUT.

-H-	-W-	-D-

APPROVAL:



E-BOX
101 Air Park Industrial Road
Alabaster, Alabama 35007
Phone: (205)663-9189
Fax: (205)663-9587

