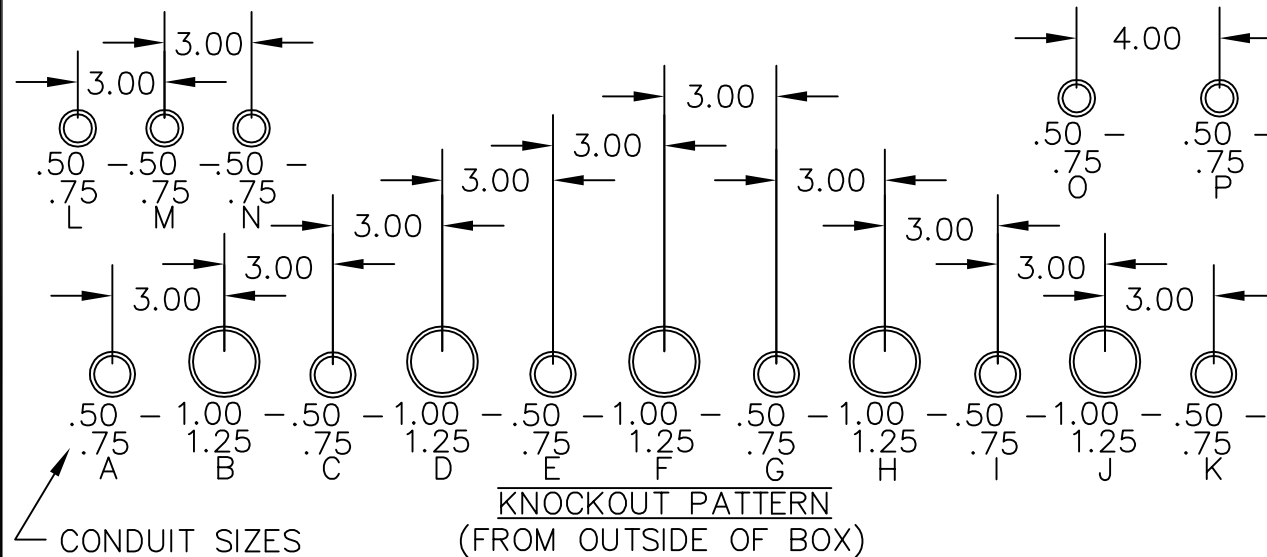


TYPE 1 SCREW COVER BOXES WITH KNOCKOUTS

KNOCKOUT PATTERN
(FROM OUTSIDE OF BOX)

APPLICATION:

—DESIGNED FOR USE AS JUNCTION BOXES AND PULL BOXES. FOR FLUSH INSTALLATIONS, FLUSH COVER, AND TELEPHONE FRONTS MUST BE ORDERED SEPARATELY.

CONSTRUCTION:

—CODE GAUGE G-90U GALVANIZED STEEL.
—FLAT, REMOVABLE COVERS FASTENED WITH PLATED STEEL SCREWS.
—KEYHOLE SCREW SLOTS IN THE COVER PERMIT REMOVAL OF THE COVER WITHOUT EXTRACTING THE SCREWS.
—VARIOUS SIZES OF EASILY REMOVABLE CONCENTRIC KNOCKOUTS ON ALL FOUR SIDES.

—MOUNTING HOLES ON BACK OF BOX.

FINISH:

—E-BOX TYPE 1 SCREW COVER BOXES ARE PROVIDED STANDARD IN GALVANIZED STEEL G-90U.

KNOCKOUT PATTERN

H	W	D	ALONG H	ALONG W

APPROVAL: _____



E-BOX
101 Air Park Industrial Road
Alabaster, Alabama 35007
Phone: (205)663-9189
Fax: (205)663-9587

