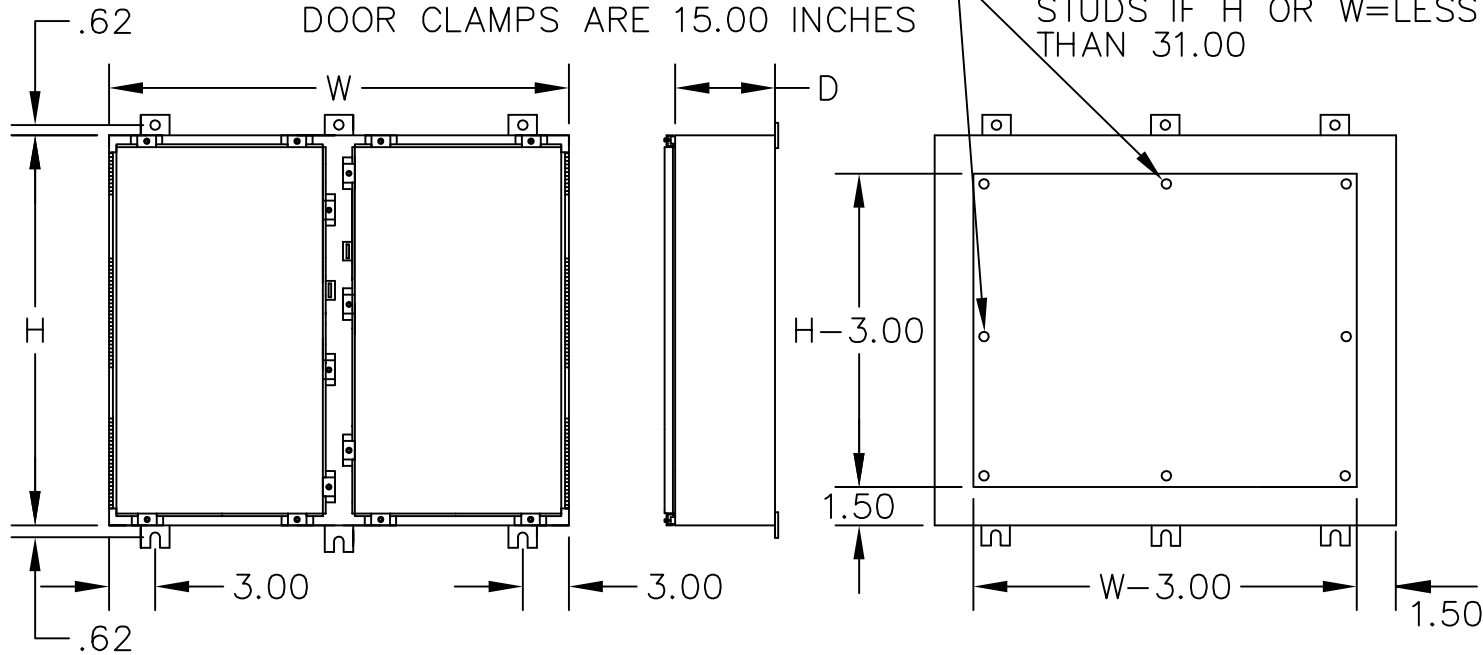


CATALOG#: SDWN4X

UL LISTED

CANADIAN UL LISTED

NOTE: MAXIMUM SPACING BETWEEN
DOOR CLAMPS ARE 15.00 INCHES



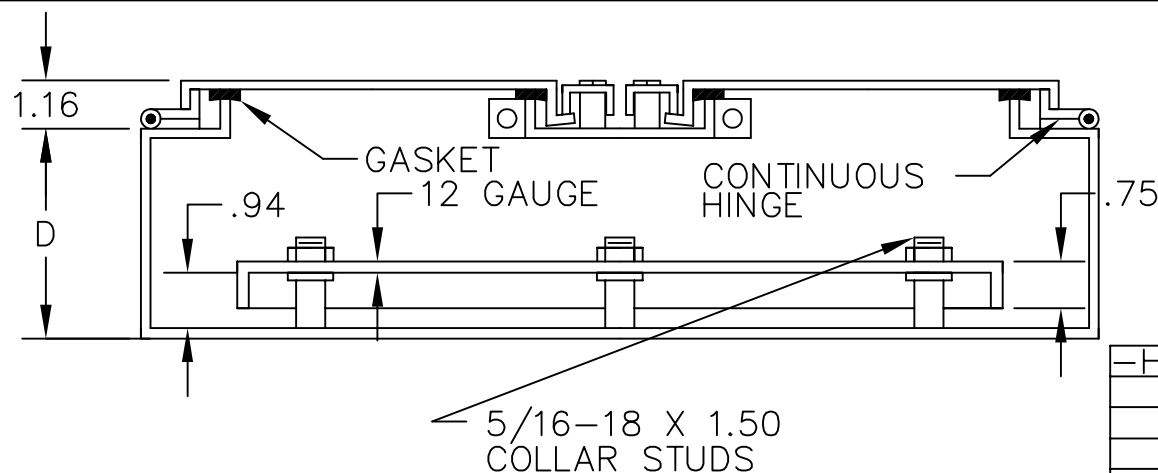
CONSTRUCTION:

- 14 GAUGE TYPE 304 STAINLESS STEEL.
- SEAMS CONTINUOUSLY WELDED AND GROUND SMOOTH.
- REMOVABLE CENTERPOST FOR EASY PANEL INSTALLATION.
- DOOR CLAMPS ON THREE SIDES OF EACH DOOR.
- HEAVY GAUGE CONTINUOUS HINGE.
- TONGUE AND HASP FOR PADLOCKING.
- OIL RESISTANT GASKET.
- STUDS PROVIDED FOR MOUNTING OPTIONAL PANEL.

FINISH:

- NUMBER 3 SMOOTH BRUSH FINISH.

STAINLESS STEEL TWO DOOR WALL MOUNTED TYPE 4X ENCLOSURES



APPROVAL:



E-BDX
101 Air Park Industrial Road
Alabaster, Alabama 35007
Phone: (205)663-9189
Fax: (205)663-9587



H	W	D